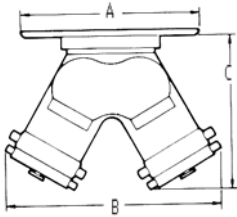


**DOUBLE CLAPPER TWO-WAY INLETS WITH PLATE AND PLUGS**



Figure No. 6430-6435



An exposed auxiliary inlet connection with 500 G.P.M. inlet capacity to supplement fire protection water supply. Drop clappers provide unobstructed waterway. Branding plate identifies and enhances appearance of inlet connection.

**STANDARD EQUIPMENT:** Cast brass two-way inlet body with drop clappers and pin lug swivels; with plugs and chains; cast brass round wall plate with branding as selected. Figure No. 6440 and 6443 furnished with Sillcock flange plate with Sillcock. Outlet and inlet size as selected by figure number.

**SPECIFY THREAD AND BRANDING.**

**BRANDING:** "Auto Spkr.", Standpipe"

**FINISH:** Cast Brass

**OPTIONAL FINISHES:**

- PB - Polished Brass
- RC - Rough Chrome Plated
- PC - Polished Chrome Plated

**U/L LISTED AND FM APPROVED  
NY MEA-BSA APPROVED**



Figure No. 6440-6443

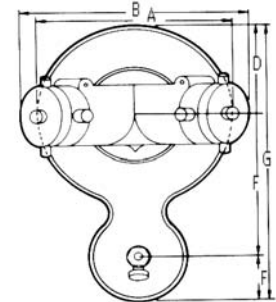
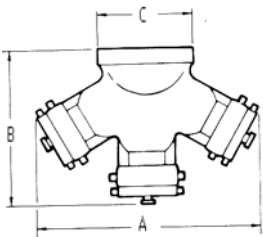


Figure No.		Size	Dimensions							
No. Sillcock	Sillcock		A	B	C	D	E	F	G	
6430	6440	4 X 2 1/2 X 2 1/2	9 1/2	12 1/2	8 1/2	4 3/4	9	2 1/2	16 1/4	
6432		6 X 2 1/2 X 2 1/2	12 5/8	11 3/4	10 1/2	4 5/8	7	1 1/2	14 1/8	
6433	6443	4 X 3 X 3	9 1/2	12 1/2	10 1/2	4 3/4	9	2 1/2	16 1/4	
6434		5 X 3 X 3	12 5/8	12 1/2	11	4 5/8	7	1 1/2	14 1/8	
6435		6 X 3 X 3	12 5/8	12 1/2	11	4 5/8	7	1 1/2	14 1/8	

**TRIPLE CLAPPER THREE-WAY INLETS**



Figure No. 6460-6461



An exposed auxiliary inlet connection with 750 G.P.M. inlet capacity to supplement fire protection water supply. Exposed design provides and economical method of satisfying Fire Dept. inlet requirements.

**STANDARD EQUIPMENT:** Cast brass three-way inlet body with triple clappers and pin lug swivels; back or angle outlet connection as selected by figure number. **SPECIFY THREAD.**

**BRANDING:** NO BRANDING/BLANK

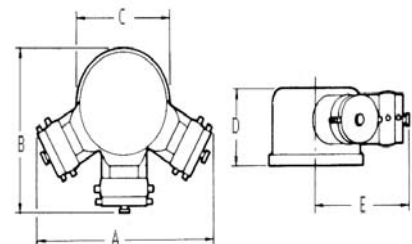
**FINISH:** Cast Brass

**OPTIONAL FINISHES:**

- PB - Polished Brass
- RC - Rough Chrome Plated
- PC - Polished Chrome Plated



Figure No. 6465-6466



Str. Body Style		Dimensions		
Figure No.	Size	A	B	C
6460	4 X 2 1/2 X 2 1/2 X 2 1/2	13 3/4	10 1/2	5
6461	6 X 2 1/2 X 2 1/2 X 2 1/2	13 3/4	10 1/2	7 1/2

Angle Body Style		Dimensions				
Figure No.	Size	A	B	C	D	E
6465	4 X 2 1/2 X 2 1/2 X 2 1/2	14 1/2	11 1/2	7 5/8	6 1/2	8
6466	6 X 2 1/2 X 2 1/2 X 2 1/2	14 1/2	11 1/2	7 5/8	6 1/2	8