

FOUR-WAY CLAPPER INLET



Figure No. 6230 - 6234

An Auxiliary Inlet Connection with 1000 G.P.M. minimum inlet capacity. Used to supplement fire protection water supply. Flush design enhances appearance and provides unobstructed passage.

STANDARD EQUIPMENT: Cast brass body, four-way inlet body with drop clappers, 6" outlet connection as selected by figure number, brass plate, adapters and plugs with chains.

SPECIFY THREAD, BRANDING AND BODY STYLE.

BRANDING: "Standpipe", "Auto Sprk.", "Combination Standpipe and Sprinkler Systems", "Dry Standpipe". Special lettering available.

FINISH:

Polished Brass

OPTIONAL FINISH:

PC - Polished Chrome Plated

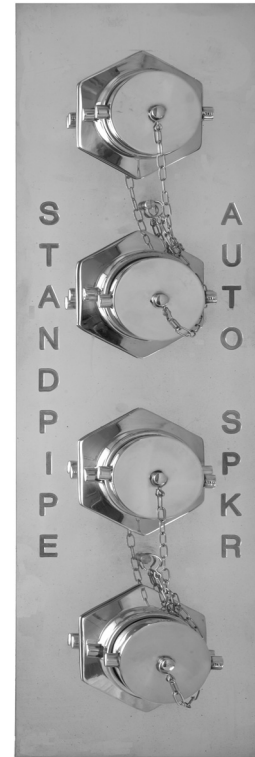


Figure No. 6240 - 6244

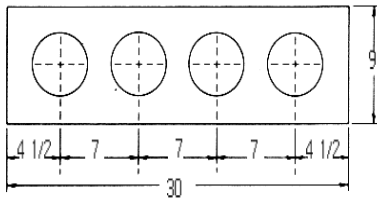


Diagram of Horizontal Plate

HORIZONTAL		VERTICAL	
Fig. No.	Style	Fig. No.	Style
6230	1HB	6240	2VB
6231	3HR	6241	5VB
6232	4HL	6242	6VT
*6233	7HT	*6243	9VR
*6234	8HB	*6244	10VL

* U/L LISTED

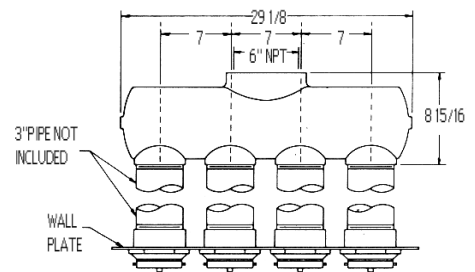
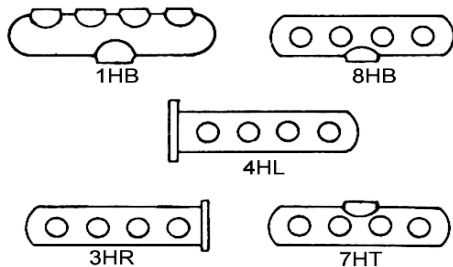


Diagram of Horizontal Body

HORIZONTAL BODY STYLE



VERTICAL BODY STYLE

