

TWO-WAY CLAPPER INLET



Figure No. 6010-6042

An Auxiliary Inlet Connection with 500 G.P.M. minimum inlet capacity. Used to supplement fire protection water supply. Flush design enhances appearance and provides unobstructed passage.

STANDARD EQUIPMENT: Cast brass body, double clapper inlets, brass plate, adapters and plugs with chain. Select size and outlet connection by Figure Number.

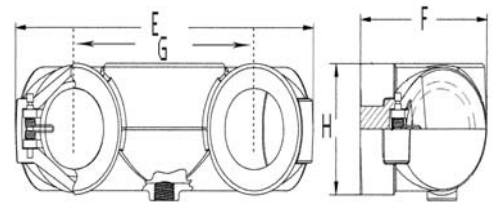
SPECIFY THREAD AND BRANDING.

BRANDING: "Standpipe", "Auto Sprk", "Combination Standpipe and Sprinkler Systems", "Dry Standpipe". Special lettering available.

OPTIONAL FINISHES:

- PB - Polished Brass
- PC - Polished Chrome Plated

NY BSA-MEA APPROVED



***Diagram of Bottom & Top Body**

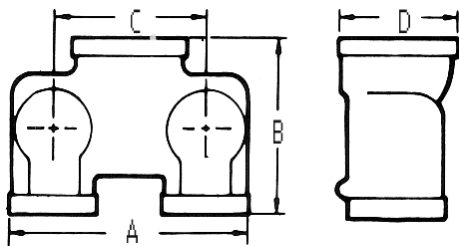


Diagram of Back Body

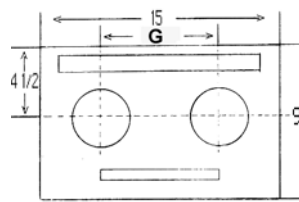


Diagram of Plate for 6030 Series

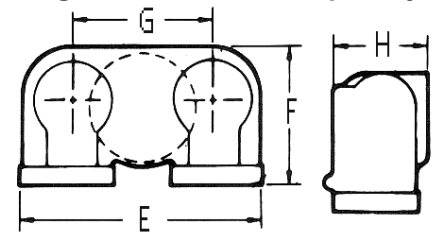


Diagram of Bottom & Top Body

OUTLET LOCATIONS			Size	DIMENSIONS							
BACK Fig. No.	BOTTOM Fig. No.	TOP Fig. No.		A	B	C	D	E	F	G	H
6010			4 X 2 1/2 X 2 1/2	11 1/2	6 1/2	7	5 1/4				
	*6011	*6012	4 X 2 1/2 X 2 1/2					12 1/2	5 3/8	7	4
6020			6 X 2 1/2 X 2 1/2	11 1/4	7 3/8	7 5/8	7 1/4				
	6021	6022	6 X 2 1/2 X 2 1/2					12	9 3/8	7 5/8	5 3/4
6030			4 X 3 X 3	12 1/4	8 1/4	7 5/8	5 1/2				
	*6031	*6032	4 X 3 X 3					12 5/8	5 3/8	7 5/8	4
6035			5 X 3 X 3	12 1/4	8 3/4	7 5/8	7 3/8				
	6036	6037	5 X 3 X 3					12	9 1/2	7 5/8	5 7/8
6040			6 X 3 X 3	12 1/4	8 3/4	7 5/8	7 3/4				
	6041	6042	6 X 3 X 3					12	9 1/2	7 5/8	5 7/8